

Installer Property File Creation
Oracle FLEXCUBE Universal Banking
Release 14.2.0.0.0
[December] [2018]



Table of Contents

1.	CREATING PROPERTY FILE FOR ORACLE FLEXCUBE INSTALLER.....	1-1
1.1	INTRODUCTION.....	1-1
1.2	CREATING PROPERTY FILE.....	1-1
1.2.1	<i>Custom Installation.....</i>	<i>1-12</i>
1.2.2	<i>Setting General Properties.....</i>	<i>1-12</i>
1.2.3	<i>Setting Single Sign on.....</i>	<i>1-16</i>
1.2.4	<i>Setting SMTPS(Email)/Branch/DMS details.....</i>	<i>1-18</i>
1.2.5	<i>Setting OFTW details.....</i>	<i>1-20</i>
1.2.6	<i>Configuring Scheduler.....</i>	<i>1-20</i>
1.2.7	<i>Setting Scheduler EMS Properties.....</i>	<i>1-23</i>
1.2.8	<i>Setting EMS FTP/FTPS Properties.....</i>	<i>1-26</i>
1.2.9	<i>Setting Scheduler BIP/GI Upload Queue Properties.....</i>	<i>1-28</i>
1.2.10	<i>Setting Reports details.....</i>	<i>1-29</i>
1.2.11	<i>Setting BPEL Properties.....</i>	<i>1-31</i>
1.2.12	<i>Saving Property File.....</i>	<i>1-32</i>

1. Creating Property File for Oracle FLEXCUBE Installer

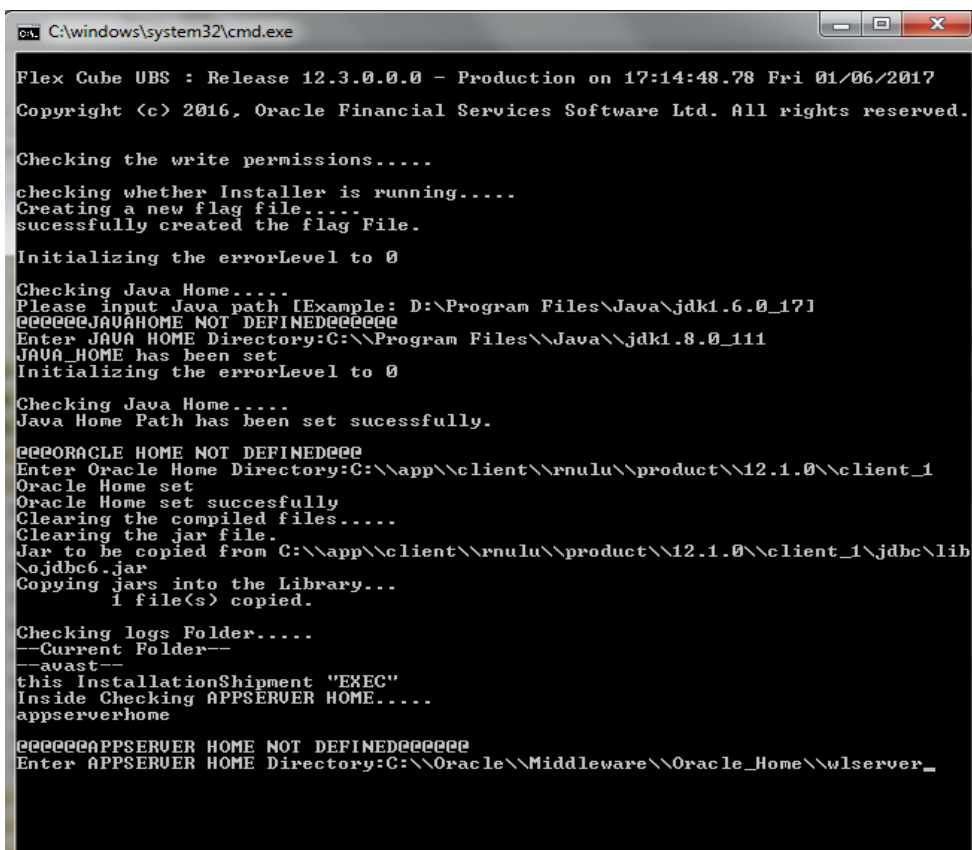
1.1 Introduction

This chapter explains the steps to create property file for Oracle FLEXCUBE using ORACLE FLEXCUBE Installer Application. While creating this property file, the environment property file also gets generated.

1.2 Creating Property File

To create the property file for Oracle FLEXCUBE, follow the steps given below:

1. Launch Oracle FLEXCUBE Installer i.e. **FCUBSInstaller.bat** (for Windows), and **FCUBSInstaller.sh**(for Linux, bash shell recommended). These files are available in INSTALLER/SOFT/GUI



```
C:\windows\system32\cmd.exe
Flex Cube UBS : Release 12.3.0.0.0 - Production on 17:14:48.78 Fri 01/06/2017
Copyright (c) 2016, Oracle Financial Services Software Ltd. All rights reserved.

Checking the write permissions.....
checking whether Installer is running.....
Creating a new flag file.....
sucessfully created the flag File.

Initializing the errorLevel to 0

Checking Java Home.....
Please input Java path [Example: D:\Program Files\Java\jdk1.6.0_17]
@@@@@@@JAVAHOME NOT DEFINED@@@@@
Enter JAVA HOME Directory:C:\\Program Files\\Java\\jdk1.8.0_111
JAVA_HOME has been set
Initializing the errorLevel to 0

Checking Java Home.....
Java Home Path has been set sucessfully.

@@@@@ORACLE HOME NOT DEFINED@@@
Enter Oracle Home Directory:C:\\app\\client\\rnulu\\product\\12.1.0\\client_1
Oracle Home set
Oracle Home set sucesfully
Clearing the compiled files.....
Clearing the jar file.
Jar to be copied from C:\\app\\client\\rnulu\\product\\12.1.0\\client_1\\jdbc\\lib
\\ojdbc6.jar
Copying jars into the Library...
1 file(s) copied.

Checking logs Folder.....
--Current Folder--
--avast--
this InstallationShipment "EXEC"
Inside Checking APPSERUER HOME.....
appserverhome

@@@@@@@APPSERUER HOME NOT DEFINED@@@@@
Enter APPSERUER HOME Directory:C:\\Oracle\\Middleware\\Oracle_Home\\wlserver_1
```

In the first screen, provide the following details:

i. **JAVA HOME PATH**

Provide the JDK home path with the latest version.

ii. **ORACLE HOME PATH**

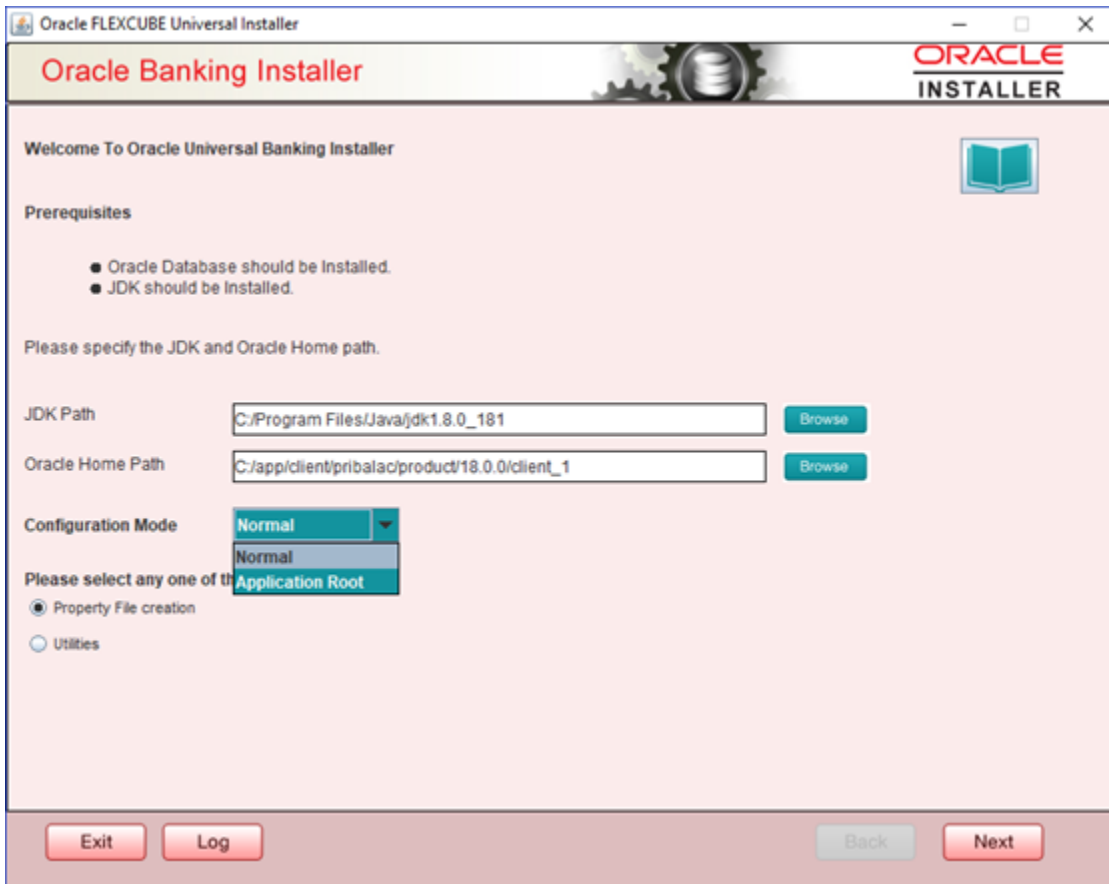
Provide the Oracle 12C Client Path for version below 14.2.

From 14.2 version, Provide the Oracle 18C Client path irrespective of the configuration mode being Normal or Approval Configuration.

iii APP SERVER HOME PATH

Provide the app server home path

After providing these details, INSTALLER-GUI gets started. And follow the below details. Ensure the Pre-requisites are available.



Enter the following details

JDK Path

Maintain Home folder path of JDK. The JAVA HOME path given in previous screen gets defaulted.

Oracle Home

Maintain home folder path of Oracle Database Client. The ORACLE HOME path given in previous screen gets defaulted.

Configuration Mode

There are two modes of configuration modes available

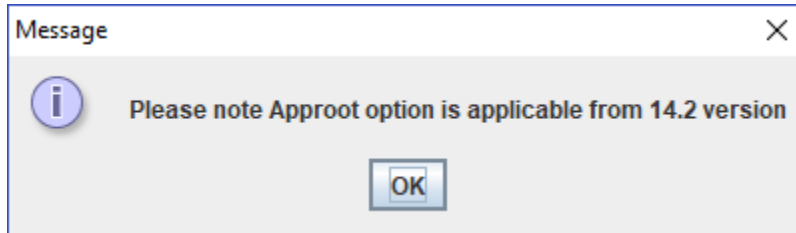
1. Normal

Configuration mode has to be selected as 'Normal' for Single Tenant deployment.

2. Application Root

Configuration mode has to be selected as 'Application Root' for Multi-Tenant deployment from 14.2 version. This would use Container Database (CDB)/Application Container feature of Oracle database.

Upon selecting the Application root configuration mode, the below message will be displayed.

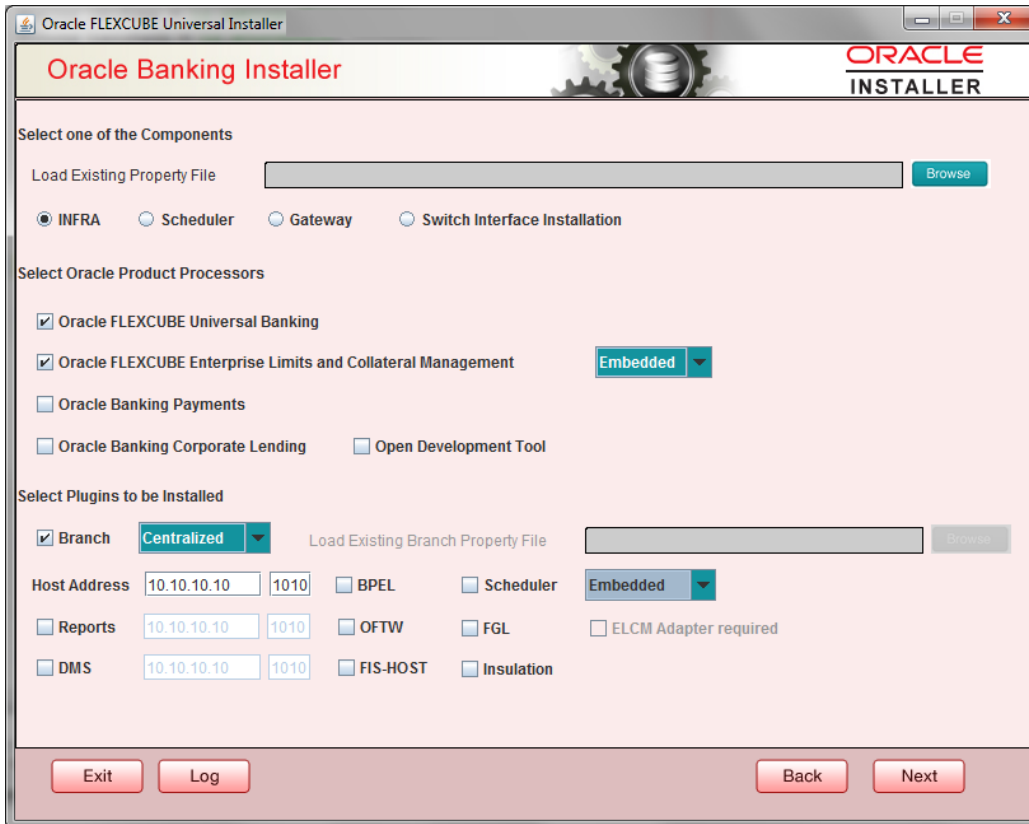


Select one of the radio buttons

1. **Property File creation**
2. **Utilities**

Based on the selection, Next screen will be shown .Click Property File creation for the current case.

2. Click 'Next' and the following screen is displayed.



1. Select the component for which property file is to be created.
 - a. INFRA is for FCUBS property file creation .To create property file for Scheduler or Gateway or Switch Interface Installation, please refer the respective property file creation document.
2. Select the required Product Processors to make respective property files.
 - a. Oracle Financial Universal Banking product processor contains Rest of Flexcube other than Payments, ELCM and OFCL etc.
 - b. Oracle FLEXCUBE Enterprise Limits and Collateral Management (ELCM) has three types .They are Embedded, CO-Deploy and Standalone (Elcm Adapter) .Please choose proper option. Oracle FLEXCUBE Enterprise Limits and Collateral Managements can be selected as individual application or along with Oracle Financial Universal Banking. Also ELCM Adapter required checkbox is available.
 - c. Oracle Banking payments can be selected as an individual application or along with Oracle Financial Universal Banking.
 - d. Oracle Banking Corporate Lending can be selected as individual application or along with Oracle Financial Universal Banking.
 - e. Open Development Tool(ODT) can be selected to install ODT, that allows end user to design ODT screens.
3. In the screen below, select the Plugins to be included in the application.

4. If you need to modify an existing property file, load it using the respective browse button.

Plugins will be enabled and disabled based on the combination of Product Processors and components selected.

For decentralized property file creation ,select branch plugin and select Decentralized option from the drop down.

These are the plugins available

- Branch
- BPEL
- Scheduler
- Reports
- OFTW(Oracle FLEXCUBE Testing Workbench)
- FGL
- DMS(Document Management System)
- FIS-HOST
- Insulation

You can load existing property-file to make any modifications .Separate browse buttons available for Centralized and Decentralized property file loading

3. Click 'Next' again

4. Screen to capture SMS and entity Schema will appear in normal configuration mode:

The screenshot displays the Oracle FLEXCUBE Universal Installer window. The title bar reads "Oracle FLEXCUBE Universal Installer". The main window has a header with "Oracle Banking Installer" on the left and the "ORACLE INSTALLER" logo on the right. The content area is divided into two sections: "SMS Schema Details" and "Entity Schema Details".

SMS Schema Details: A table with two columns: "Name" and "Value".

Name	Value
Username	FCUBSTEST
Password	*****
Service Name	FCTOOLSNEW
IP Address	10.184.132.72
Port	1521
TNS Connect Descriptor	FCTOOLSNEW

Below the table is a "Test Connection" button.

Entity Schema Details: A section with a checkbox "Same as SMS Schema" (unchecked). Below it are two text boxes: "Entity Id" containing "ENTITY_ID1" and "JNDI Name" containing "jdbc/fc/devDS".

Below the text boxes is another table with two columns: "Name" and "Value".

Name	Value
Username	FCUBSTEST
Password	*****
Service Name	FCTOOLSNEW
IP Address	10.184.132.72
Port	1521
TNS Connect Descriptor	FCTOOLSNEW

Below the table is a "Test Connection" button and a checkbox "Compile in All Entities" (unchecked).

At the bottom of the window, there are four buttons: "Exit", "Log", "Back", and "Next".

Provide the SMS schema details to capture the credentials which will be used for DB Compilation.

Note: IP Address should be same as mentioned in the TNSnames.ora

Once the connection is successful env.properties file present in path
INSTALLER→SOFT→GUI→logs→env.properties will get updated with schema details in encrypted format.

For Multi-Entity Details →

Scenario for Single Entity:

- Here Entity Schema is mandatory, atleast minimum one entry should be provided.
- Entity Id value is default i.e. 'ENTITY_ID1' for first entry.
- Provide the JNDI Name for the ENTITY_ID1. By default the jndi name is 'jdbc/fcjdevDS'
- Give the Schema Details for the Entity1.
- Here Compile In All Entities Field is 'N'. (As using the Single Entity Concept).

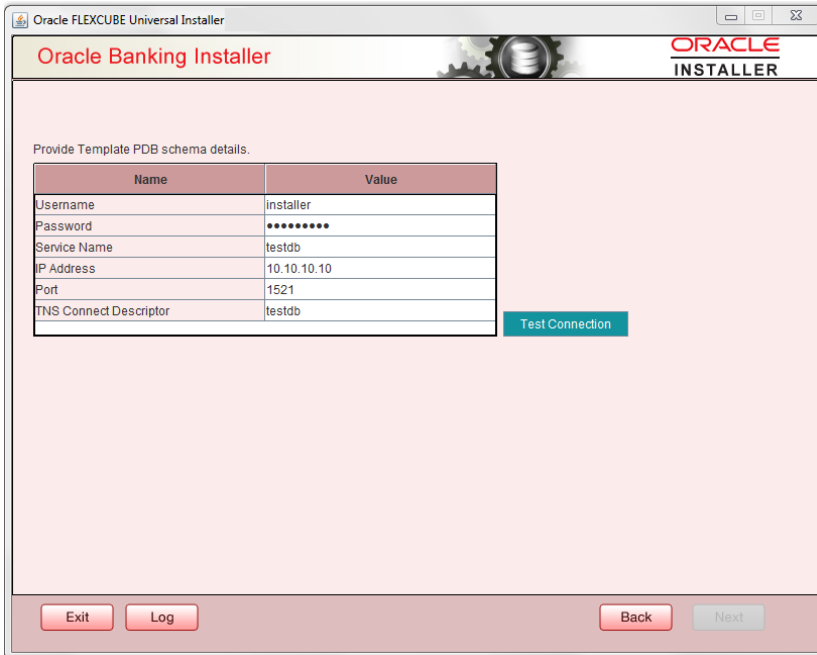
Scenario for More than One Entity, i.e. Multi Entity :

- After providing the Single Entity details, click on '+' Add the rows.
- Now give the details for Entity_ID2. Here the field is mandatory.
- Provide the schema details and the JNDI name.
- Next and Prev button is to traverse for entity screens.
- Can also add the entites and delete the entities.

Approot configuration mode – Schema details:

While inputting the schema details, for Application root configuration mode user has to input the Template PDB schema details. (Refer **Multi-Tenant Deployment.docx** for details about the template PDB for multi entity setup)

Screen to capture Template PDB Schema will appear in Approot configuration mode is displayed below:

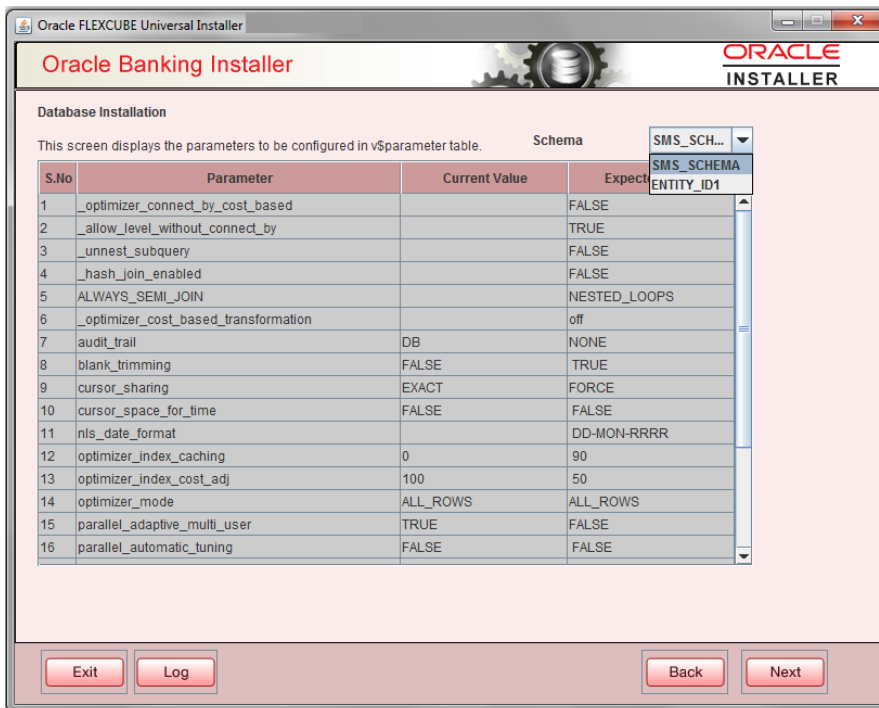


Current Multi entity setup configuration is not applicable from 14.2 version onwards.

- Click on 'Test Connection' button. After Successful connection click on 'Next' button to proceed and below Screen occurs. This Screen displays database parameters listed in v\$parameter table.

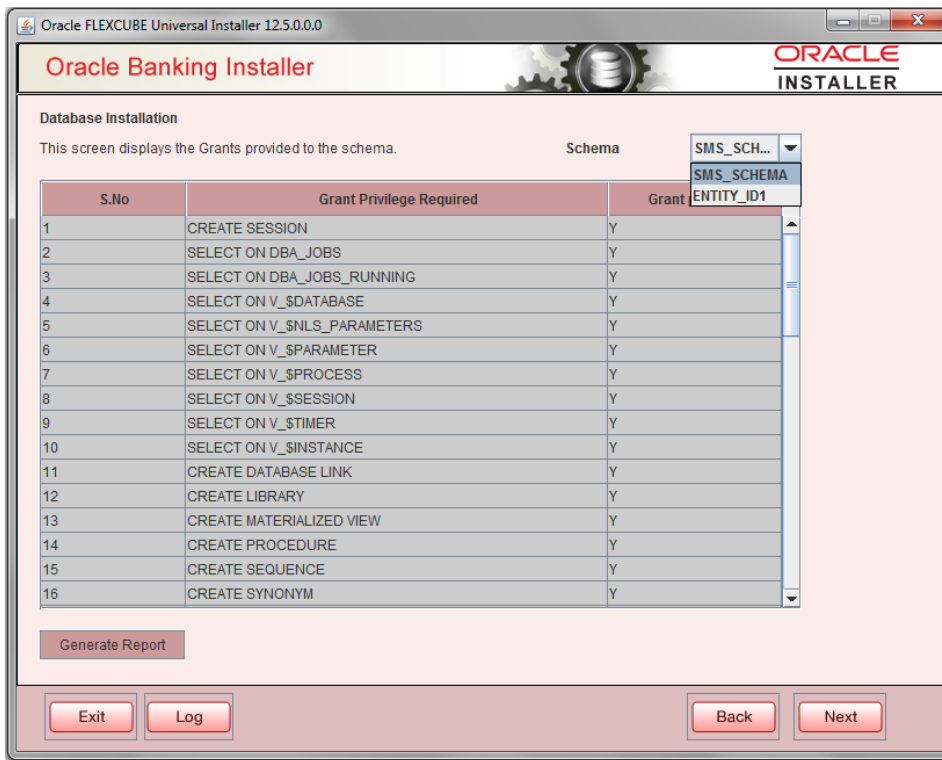
This page is Read only used as reference to know the database parameters.

Schema drop down list is provided to verify parameters of SMS and Entity Schemas.



- Click on 'Next' Button. This screen displays the grants provided to the schema. If object compilation is required and the privilege is not given, then you can find that out from this screen.

Schema drop down lists SMS and Entity Schemas. Select Schema and proceed further.



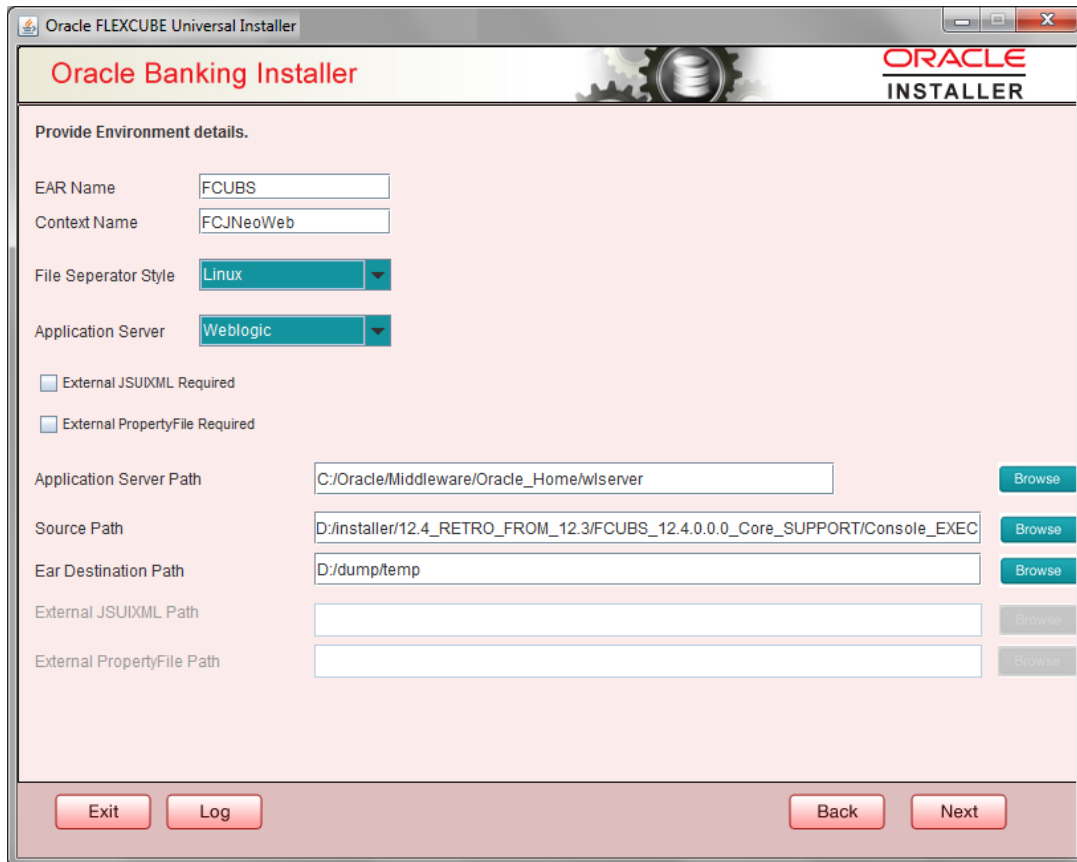
- Click 'Generate Report' button, the installer creates an SQL file 'grantScript.sql' containing the script for granting the privileges in the 'Logs' folder and the following screen is displayed

You can use this file to get the access.



Only the sys user can execute the file 'grantScript.sql' for granting privileges.

- Click 'Next' again and the following screen is displayed:



EAR Name

Specify a name for the Application to be deployed.

You cannot use special characters such as '.' (Dot), ',' (comma), '\$' etc. However, you may use '_' (underscore). – Applicable for both Windows and Linux.

Context Name

Based on the Application type selected, the Installer displays the application context. However, you may modify the default value.

This information will be updated in 'application.xml'. In case of a WebLogic server, this will be updated in 'weblogic.xml'.

File Separator Style:

Specify the type of file separator (For example: Linux or Windows). Select the appropriate one from the drop-down list. You also need to specify the version of the selected operating system.

Application Server

Specify the application server in which you are creating the property file. Select the appropriate one from the adjoining drop-down list. For WebSphere, External JSUIXML Required option is not supported.

External JSUIXML Required

Specify whether screen changes will be deployed as External JSUIXML for the application.

EXTERNAL_JSUIXML_REQUIRED=Y/N: Depending on requirement

EXTERNAL_JSUIXML_REQUIRED=N: JS and UIXML files are included inside the application EAR.

EXTERNAL_JSUIXML_REQUIRED=Y: JS and UIXML and HELP files are kept in an external path in the application server.

External Property File Required

Specify whether screen changes will be deployed as External fcubs.properties for the application.

EXTERNAL_PROPERTY_PATH_REQUIRED =Y/N: Depending on requirement

EXTERNAL_PROPERTY_PATH_REQUIRED =N: fcubs.properties file is included inside the application EAR.

EXTERNAL_PROPERTY_PATH_REQUIRED =Y: fcubs.properties file is kept in an external path in the application server.



External property file path should have the property file name also with it.

For example: C:\App\fcubs.properties

Application server path

Provide the Application Server Path.

Source Path

Provide the source path of the console exec directory. (Mention exact folder name after unzip the source)

Ear Destination path

Specify the path where Ear needs to be copied after building it using SOFT Installer.

External JSUIXML Path

In case External JSUIXML Required option is checked, External JSUIXML path on the application server machine has to be specified here. External JSUIXML required option is supported only for Weblogic Application Server. EXTERNAL_JSUIXML_PATH: ex:- /scratch/work_area/DEV/FC124_UBS/JS_UIXML_HELP -this can be any path in the Application server.

External Property File Path

In case External Property File required option is checked, External Property File path on the application server machine has to be specified here. ss

9. Click 'Next' to continue and following screen is displayed:



Release

Specify the release in which you are creating the property file. Default Option would be 'KERNEL'. The options are:

- KERNEL
- MX Cluster

Specify the Hashing algorithm iteration count. By default it is 1000.

'Security Key for Encryption Logic' is the key (exact 16 characters) for all encryption logic. By default is 'oraclefinancials'.

1.2.1 Custom Installation

Oracle FLEXCUBE Universal Installer

Oracle Banking Installer

ORACLE
INSTALLER

Property File Creation - DataSource

Please enter DataSource Names

SMS Data Source

Branch Data Source

Scheduler Data Source

ELCM Data Source

OFCL Data Source

PM Online JNDI

PM Batch JNDI

ELCM Webservices Provider URL

Host Server URL

Standalone Scheduler URL

Exit Log Back Next

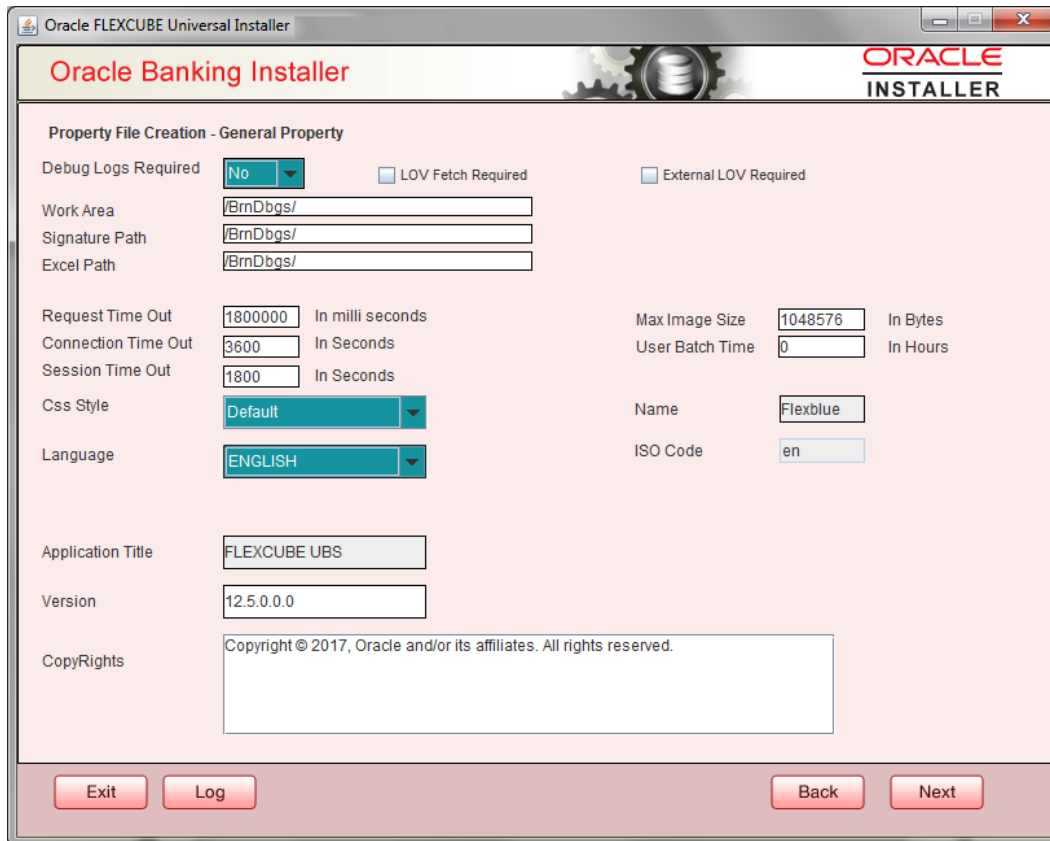
1. Please enter Data sources required which will be asked as per the product, Plug-in and Component combinations chosen in the first screen.
2. Sms Datasource will be always enabled as it is required for most of the cases.
3. Branch datasource will be enabled if FCUBS product processor is selected.
4. Elcm Datasource will be enabled if ELCM product processor is selected.
5. PM related datasources will be enabled for PM product processor.
6. Host Server is the server where FCUBS application is deployed/to be deployed.
7. Standalone scheduler URL will be enabled is Standalone option is selected.

Click next to proceed to the next screen.

1.2.2 Setting General Properties

This section describes the process of setting common properties of Oracle FLEXCUBE Payments.

The installer displays the 'General Property' screen.



Specify the following details:

Debug Logs Required

If debug option is required, select 'Yes' from the drop-down list. If not required, select 'No'. By default the value is 'No'.

Note:

Parameter APPLICATION_WORK_AREA in fcubs.properties will be updated to "Work Area" path provided during installation.

Parameter DEBUG will be updated based on "Debug Logs Required" selection.

To log debug for the user, following should be available.

- In Day 0 Setup CSTB_PARAM table will be appended with parameter name WORK_AREA and path provided for debug logs
- CSTB_DEBUG table should have entries for required modules.
- Corresponding user entries should be input in CSTB_DEBUG_USERS.

Example: If SM module log is enabled for the user, then there should be an entry in cstb_debug_users.

Table: CSTB_DEBUG_USERS (User Level)

Module	Debug	User ID
SM	Y	XYZ

Table: CSTB_DEBUG (Bank Level)

Module	Debug
SM	Y

All the configuration will be done using back-end scripts, which can be executed by Data Controller.

Snapshot of 'fcubs.properties' is displayed below:

```
##### COMMON PROPERTIES #####
APPLICATION_NAME=FCJ
APPLICATION_EXT=FCROFC
APPLICATION_SERVER=WL
APPLICATION_WORK_AREA=/scratch/work_area/DEV/FC125R2/APPLSGS
DEBUG=Y
SSL_ENABLED=Y
OPSS_AVAILABLE=N
BRANCH_CENTRALIZED=Y
REQUEST_TIME_OUT=1800000
```

Change Logs can be visited to view audit information.LOV Fetch Required

If you check this box, the option lists in Oracle FLEXCUBE displays the matching values based on the first characters that you enter in a field. If you specify the first three characters of a value to be entered in an option list and tab out, the system displays the complete list of values that are matching the first three characters.

If you do not check this, option lists does not show the matching values based on the first few characters. You need to specify the complete value against the field.

External LOV Required

If you check this box, External Lov option for external Limits in FLEXCUBE will be enabled.

Work Area

Specify the work area.

For example: D:\BrnDbgs\

Signature Path

Specify the location at which the signature images should be placed.

Excel Path

Specify the location at which the excel files should be generated.

Request Time Out

Specify the database request timeout value in milli seconds. This is the maximum number of seconds the database waits for a query to return the result.By default it is 1800000 milli seconds.

Connection Time Out

Specify the database connection timeout value in seconds. This is the maximum number of seconds the application waits for a connection to the database to open.

Session Time Out

Enter the session time out value in seconds. This is the maximum number of seconds during which the application gets active without any user intervention. If there is no user intervention continuously for the duration specified here, the user session gets expire.

Max Image Size

Specifies the maximum image size that can be uploaded. The default size is 1048576 bytes.

CSS Style

Specify the CSS style to be used from the adjoining drop down list. You can select one of the following CSS styles:

- Default – select this to apply the default style provided along with Oracle FLEXCUBE
- Custom – select this to apply a custom style

Name

Specify the name of the CSS style.

Once you have specified the above details, click 'Next'

Language

Specify the language in which you wish to see Oracle FLEXCUBE UBS. ENGLISH is the default language. However, based on the requirement, you can set a different language. Select the appropriate one from the drop-down list.

Based on the language selected, the installer displays the ISO code.

Application Title

Specify the application title.

For example: FLEXCUBE UBS

Version

Specify the application version.

For example: 14.0.0.0.0

CopyRights

Specify the copyright details.

For example: Copyright © 2017, Oracle and/or its affiliates. All rights reserved.

1.2.3 Setting Single Sign on

Oracle FLEXCUBE Universal Installer

Oracle Banking Installer

ORACLE INSTALLER

Property File Creation - Single Sign on

SSO Required SSO Type **DEFAULT**

SSO KEY **DN**

Authentication details maintained external to FLEXCUBE

External Password Required Authentication Type **MSAD**

External User Login Required

OPSS Available

Option to provide LDAP server details

No.	Name	Value
1	LDAP SERVER URL	LDAP://10.10.10.10:111
2	LDAP SSL ENABLED	<input type="checkbox"/>
3	SECURITY AUTHENTICATION TYPE	Simple
4	DOMAIN NAME	I-FLEX.COM
5	LDAP SERVER TIMEOUT	0

Option to provide SAML details

No.	Name	Value
1	SAML CERTIFICATE PATH	D:\Security\SAML_Implementation\TestFiles\certstore\b...
2	SAML CERTIFICATE PASSWORD	*****
3	SAML CERTIFICATE ALIAS	barc
4	SAML VALID AUDIENCE	bPAID_BWSIT

Exit Log Back Next

Specify the following details:

SSO Required

Check this box to enable single sign-on (SSO). If you check this box, you need to enter the SSO Key.

SSO Type

This is disabled. This is enabled on selecting SSO Required Flag. Specify the SSO Type from the list of following:

- (i) DEFAULT
- (ii) TOKEN
- (iii) SAML

By default, 'DEFAULT' option is selected; however, you can change it.

If SAML is selected, SAML details table below will be enabled. Please enter SAML details such as Certificate Path, password, alias and valid audience.

SSO KEY

Specify the SSO key. If you have checked the box 'SSO Required', it is mandatory to specify the SSO key. By default the value is 'DN'

If you have checked the box 'SSO required', the Installer skips the following two screens and directly navigate to the SSL screen shown below in this manual.

If you have not checked the box 'SSO required', then on clicking the 'Next' button, the screen for enabling SSL options is displayed:

External Password Required

Check this box to allow the user-login using MSAD/LDAP password irrespective of the user ID. If you check this box, the user ID can be either the MSAD/LDAP/ user ID or the FCUBS user ID. And the password can be MSAD/LDAP/ server password only.

If LDAP is selected, table related to LDAP will be enabled .Please enter LDAP server URL,SSL enabled,Security authentication type,Domain Name and LDAP Server timeout details.

By default, this check box is unchecked. However, you can change this.

External User Login Required

Check this box to enable user login using MSAD/LDAP/ user ID. If you check this box, the user can login using MSAD/LDAP/ server user ID as well as using FCUBS user ID.

If you do not check this box, the user can login using FCUBS user ID only.

By default, this check box is unchecked. However, you can change this.



'Authentication Type' is enabled if one of the above check boxes is checked.

Authentication Type

Select the authentication type from the adjoining drop-down list. This is the type of external server that is used for authentication. This option is enabled only when External Password Required checkbox is checked. You can select one of the following options:

- MSAD (Microsoft Active Directory)
- LDAP (Lightweight Directory Access Protocol)

By default, 'MSAD' is selected; however, you can change it.

Specify the following details.

OPSS is available only for weblogic and is not supported for Websphere.

IF OPSS available is checked for weblogic, the symmetric key is not stored in the property file for security reasons. If OPSS available is unchecked, the symmetric key is available in the property file and a warning message is displayed to the user.

SSL Enabled

SSL Enabled is checked by default.

Click 'Next' and the next screen gets displayed.

1.2.4 Setting SMTPS(Email)/Branch/DMS details

This section describes the method to configure email details, Branch details and DMS/IPM properties whichever is required.

The following screen is displayed:

Oracle FLEXCUBE Universal Installer

Oracle Banking Installer

ORACLE
INSTALLER

Property File Creation - SMTPS/Branch/DMS

Option for Mail configuring using SMTPS Protocol

No.	Name	Value
1	Host	samplename.mail.com
2	User Id	infra
3	User Password	*****
4	JNDI Name	mail/FCUBSMail

Option for modifying the Branch properties

No.	Name	Value
1	Date Separator	-
2	WorkFlow Frequency	6000
3	Compress Request	<input checked="" type="checkbox"/>

Option for modifying the DMS/IPM property values

No.	Name	Value
1	Login Service Address	http://10.10.10.10:1010/imaging/ws/LoginService
2	Document Service Address	http://10.10.10.10:1010/imaging/ws/DocumentService
3	Document Content Service Address	http://10.10.10.10:1010/imaging/ws/DocumentContentService
4	IPM User Name	testuser
5	IPM Password	*****

Exit Log Back Next

For SMTPS protocol, specify the following details.

Host

Specify the SMTP host name.

User ID

Specify the user ID.

User Password

Specify the user password.

JNDI Name

Specify the JNDI name.

In the next table specify the branch properties like Date Separator, WorkFlow frequency, Compress Request as required.

DMS/IPM Properties →

This table will be enabled only if DMS plug-in is enabled.

Specify the following details:

Login Service Address

This is the endpoint address of the web service (OracleIPM.WebService.EndpointAddress).

Document Service Address

This is the URL to which the Oracle IPM adapter uploads the documents (OracleIPM11G.DocumentService.EndpointAddress).

Document Content Service Address

This is the URL to which the Oracle IPM adapter uploads the documents (OracleIPM11G.DocumentContentService.EndpointAddress).



For WebSphere application server, the above three service address must end with “?wsdl”

Example for Login Service Address:

WebSphere: <http://10.10.10.10:1010/imaging/ws/LoginService?wsdl>

Weblogic: <http://10.10.10.10:1010/imaging/ws/LoginService>

In the above url replace LoginService with DocumentService and DocumentContentService respectively for Document Service Address and Document Content Service Address as well.

IPM User Name

This is the user name accessing Oracle IPM (OracleIPM11G.Authentication.UserName).

IPM Password

This is the password for the above IPM user name (OracleIPM11G.Authentication.Password).

IPM Application Name

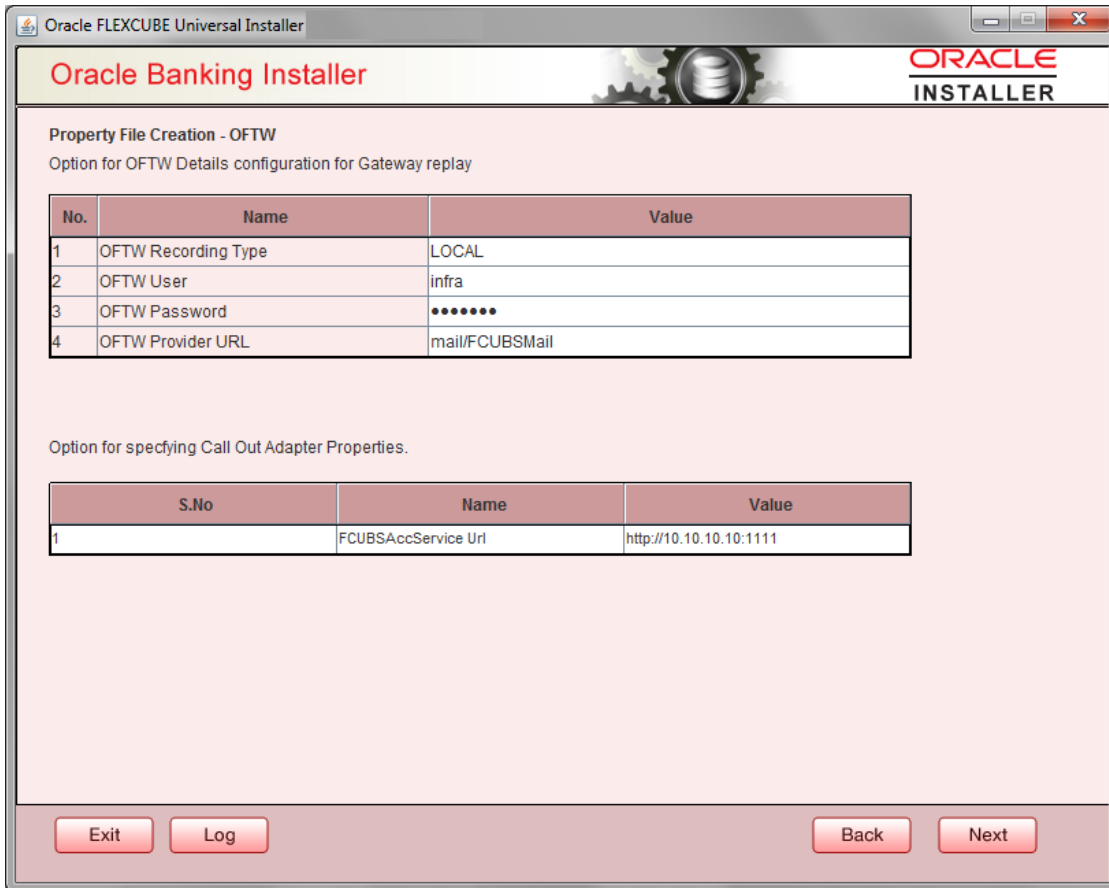
This indicates the license that provides login rights to Oracle IPM (OracleIPM11G.Application).

HTTP Session Maintain

This checkbox indicates whether HTTP session to be maintained or not (OracleIPM11G.MaintainSession).

Once you have specified the above details, click 'Next' and system displays the next screen.

1.2.5 Setting OFTW details



The screenshot shows the Oracle Banking Installer window. The title bar reads "Oracle FLEXCUBE Universal Installer". The main window has a header with "Oracle Banking Installer" and the "ORACLE INSTALLER" logo. The main content area is titled "Property File Creation - OFTW" and includes the instruction "Option for OFTW Details configuration for Gateway replay". Below this is a table with four rows of configuration data. Below the table is the instruction "Option for specifying Call Out Adapter Properties." followed by another table with one row of configuration data. At the bottom of the window are buttons for "Exit", "Log", "Back", and "Next".

No.	Name	Value
1	OFTW Recording Type	LOCAL
2	OFTW User	infra
3	OFTW Password	••••••
4	OFTW Provider URL	mail/FCUBSMail

S.No	Name	Value
1	FCUBSAccService Url	http://10.10.10.10:1111

Specify OFTW details like OFTW Recording Type, User, Password and Provider URL, if OFTW plug-in is enabled in the plug-in selection screen.

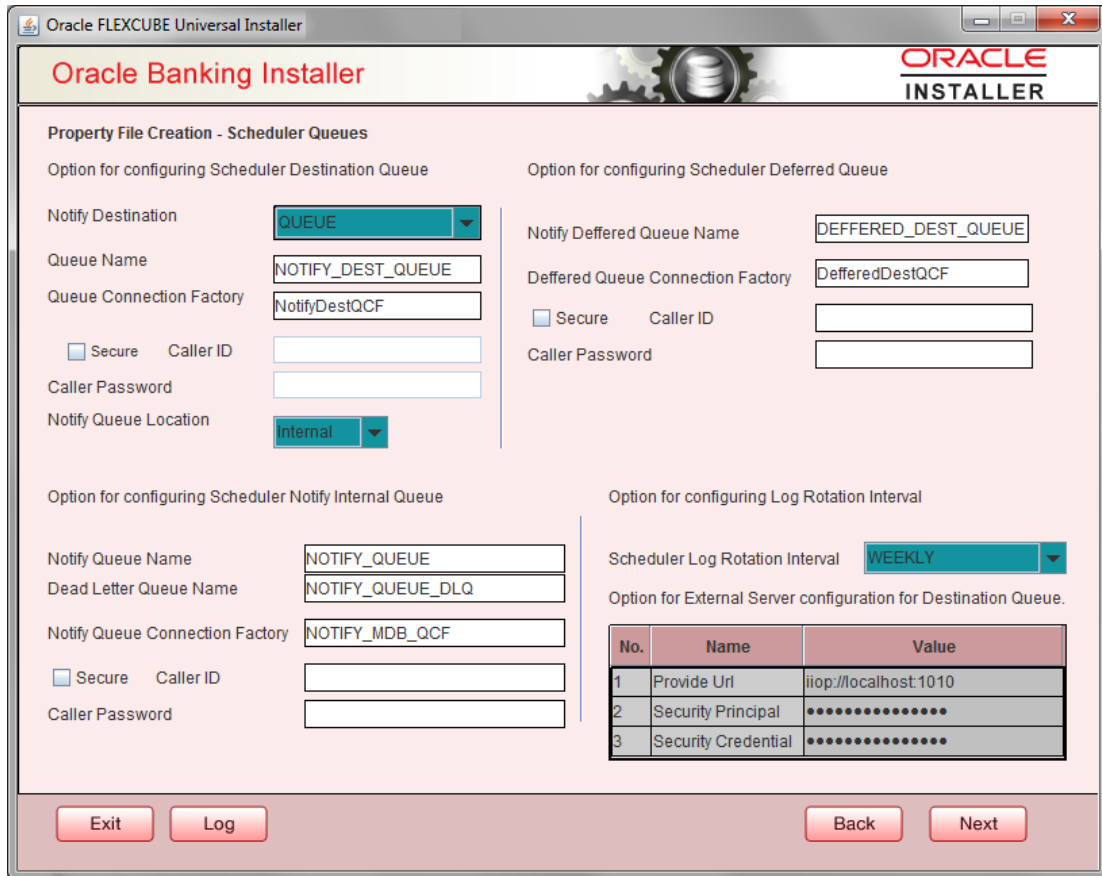
Specify Call Out Adapter Properties. By default, Name is given as 'FCUBSAccService Url' and Value as 'http://10.10.10.10:1111'. Value can be modified as required.

1.2.6 Configuring Scheduler

If “**Scheduler Standalone**” is chosen during plug-in selection time, all the below screens mentioned under scheduler configuration will “**not be applicable**”.

This section describes the method to configure scheduler data source.

1. System displays the following screen:



Specify the following details:

Scheduler Log Rotation Interval

Select the interval between each rotation of scheduler log. Given options are – DAILY, WEEKLY and MONTHLY.

Notify Destination

Specify the notify destination. Select one of the following options:

- QUEUE
- TOPIC

Queue Name

Set 'NOTIFY_DEST_QUEUE' as the destination queue name.

Queue Connection Factory

Set 'NotifyDestTCF' as the queue connection factory.

Secure

Check this box to indicate that it is a secured queue connection factory. If you check this box, you will be prompted to specify the Caller ID and Caller Password as shown in the following screen.

Specify the following details:

Notify Deffered Queue Name

Set 'DEFERRED_DEST_QUEUE' as the notify differed queue name.

Deffered Queue Connection Factory

Set 'DefferedDestQcf' as the deffered queue connection factory.

Secure

Check this box to indicate that it is a secured deffered queue connection factory. If you check this box, you will be prompted to enter the caller ID and caller password

Specify the following details:

Notify Queue Name

Set 'NOTIFY_QUEUE' as the notify queue name.

Dead Letter Queue Name

Set 'NOTIFY_QUEUE DLQ' as the dead letter queue name.

Notify Queue Connection Factory

Set 'NOTIFY_MDB_QCF' as the notify queue connection factory.

Secure

Check this box to indicate that it is a secured queue connection factory. If you check this box, you will be prompted to enter the caller ID and caller password as shown in the following screen.

Notify Queue Location

Specify the notify queue location. Select one of the following options:

- Internal
- External



For Oracle WebLogic application server, the notify queue location should be selected as 'Internal'.

If you choose 'External' following details for the external queue will be enabled

Provider URL

Specify the provide URL (iiop://localhost:1010).

1010 is the default IIOP port.

Application Server	EMS Out Initial Context Factory
Oracle WebLogic	t3://<ip_adress>:port For example: t3://10.10.10.10:1010 Here, 10.10.10.10 represents the local host and 1010

Application Server	EMS Out Initial Context Factory
	to the target server default port (AdminServer/ManagedServer).
IBM WebSphere	iiop://<ip_adress>:port For example: iiop://10.10.10.10:1010 Here, 1010 represents the default iiop port

Security Principal

Specify the login ID to access the application server.

Security Credentials

Specify the password to access the application server.

Click 'Next' to proceed with scheduler configuration.



If you choose 'Internal' as the 'Notify Queue Location', this screen is not displayed.

10. Click 'Next' and the following screen is displayed:

1.2.7 Setting Scheduler EMS Properties

No.	Name	Value
1	Incoming Dead Letter Queue Name	EMS_QUEUE_DLQ
2	Incoming backup Queue Name	EMS_QUEUE_BACK
3	Incoming Queue Connection Factory	EmsQcf
4	Secure Incoming Queue Connection	<input type="checkbox"/>
5	Incoming Queue Caller Id	
6	Incoming Queue Caller Password	
7	Outgoing Dead Letter Queue Name	EMS_QUEUE_DLQ
8	Outgoing Queue Connection Factory	EmsQcf
9	Secure Outgoing Queue Connection	<input type="checkbox"/>
10	Outgoing Queue Caller Id	
11	Outgoing Queue Caller Password	
12	Outgoing Queue Provider URL	t3://10.10.10.10:1010
13	Queue Principal
14	Queue Credential
15	Incoming Queue Name	EMS_INQUEUE
16	Outgoing Queue Name	EMS_OUTQUEUE
17	SFMS Incoming Queue	SFMS_INQUEUE
18	RTGS Incoming Queue	RTGS_INQUEUE
19	EMS Bulker Queue	BULKER_QUEUE

Specify the following details:

Incoming Dead Letter Queue Name

By default 'EMS_QUEUE_DLQ' is set as the incoming dead letter queue name, retain the same.

Incoming backup Queue Name

By default 'EMS_QUEUE_BACK' is set as incoming backup queue name, retain the same

Incoming Queue Connection Factory

Specify the name of the incoming connection factory to which EMS listens. You need to create this connection factory in the application server.

For details on connection factory creation, follow the steps described for creation of notify connection factories.

'EmsQcf' is given as default value for the incoming queue connection factory.

Secure Incoming Queue Connection

Check this box to indicate that it is a secured queue connection.

Incoming Queue Caller ID

Specify the caller ID for the secured queue connection.

Incoming Queue Caller Password

Specify the caller password for the secured queue connection.

Outgoing Dead Letter Queue Name

By default 'EMS_QUEUE_DLQ' is set as outgoing dead letter queue name, retain the same

Outgoing Queue Connection Factory

Specify the name of the outgoing connection factory to which EMS listens. You need to create this connection factory in the application server.

For details on connection factory creation, follow the steps described for creation of notify connection factories.

'EmsQcf' is given as default value for the outgoing queue connection factory.

Secure Outgoing Queue Connection

Check this box to indicate that it is a secured outgoing queue connection.

Outgoing Queue Caller ID

Specify the caller ID for the secured queue connection.

Outgoing Queue Caller Password

Specify the caller Password for the secured queue connection.

Outgoing Queue Provider URL

Specify the URL of the outgoing queue.

In case EMS OUT MDB is to be configured to queue, you need to specify the URL for outgoing provider based on the application server. By default, the Installer displays the outgoing queue provider URL for Oracle WebLogic. This value is application server dependent.

The details of Outgoing Queue Provider URL to be used for different application servers are given below:

Application Server	EMS Out Initial Context Factory
Oracle WebLogic	t3://<ip_adress>:port For example: t3://10.10.10.10:1010 Here, 10.10.10.10 represents the local host and 1010 to the target server default port (AdminServer/ManagedServer).
IBM WebSphere	iiop://<ip_adress>:port For example: iiop://10.10.10.10:1010 Here, 1010 represents the default iiop port

Queue Principal

Specify the queue principal.

If EMS OUT MDB has to be configured to queue, you need to specify the EMS out queue principal. This is the user name for the application server in which the queue is configured.

Queue Credential

Specify the queue credential.

If EMS OUT MDB has to be configured to queue, you need to specify the EMS out queue credential. This is the password for the above user name created for application server in which the queue configured.

Incoming Queue Name

Specify the incoming queue name for which EMS is configured. By default EMS_INQUEUE is specified.

Outgoing Queue Name

Specify the outgoing queue name for which EMS is configured. By default EMS_OUTQUEUE is specified.

SFMS Incoming Queue

Specify the SFMS Incoming Queue for which EMS is configured. . By default SFMS_INQUEUE is specified.

RTGS Incoming Queue

Specify the RTGS incoming Queue for which EMS is configured. By default RTGS_INQUEUE is specified.

EMS Bulker Queue

Specify the Bulker Queue name. By default **BULKER_QUEUE** is specified, retain the same. So that in fcubs.properties file, EMS_BULKER_QUEUE field gets updated to '**BULKER_QUEUE**' value.

Once you have specified the above details, click 'Next' and system displays the next screen.

1.2.8 Setting EMS FTP/FTPS Properties

Oracle FLEXCUBE Universal Installer

Oracle Banking Installer

ORACLE INSTALLER

Property file Creation - EMS FTP/FTPS
Option for Scheduler EMS FTP/FTPS configuration

No.	Name	Value
1	File TransferMode FTPS	FTPS
2	Server	10.10.10.10
3	User id	OFSS
4	Password	*****
5	File Type	.txt
6	SWIFT Format	1
7	SWIFT Message Delimiter	<input checked="" type="checkbox"/>
8	SWIFT Message Terminator	<input checked="" type="checkbox"/>
9	MEDIA	SWIFT

Option for EMS -Structured Financial Messaging System configuration

No.	Name	Value
1	Signature Block	<input checked="" type="checkbox"/>
2	Keystore File Name	/keystore
3	Keystore Alias name	*****
4	Keystore Password	*****

Exit Log Back Next

Specify the following details:

File Transfer Mode FTPS

Specify the mode of transferring files to EMS. Enter one of the following:

- FTPS (FTP over SSL)
- SFTP(Secure FTP)
- HTTP(Hyper Text Transfer Protocol)

Note – FTP is File Transfer Protocol

Server

Specify the server IP address for the selected file transfer mode.

User ID

Specify the user ID to access the server of the file transfer mode.

Password

Specify the password to for the above user ID.

File Type

Specify the type of file that is transferred. By default, the Installer sets it as '.txt'.

SWIFT FORMAT

Specify the SWIFT format.

SWIFT Message Delimiter

Specify the character which is used as the message delimiter.

SWIFT Message Terminator

Specify the character which is used as the message terminator.

Once you have specified the above details,

Specify the EMS- Structured Financial Messaging System configuration details:

Signature Block

Check this box to enable signature block.

Keystore File Name

Specify the keystore file name.

Keystore Alias Name

Specify the keystore alias name.

Keystore Password

Specify the keystore password.

Once you have specified the above details, click 'Next' and system displays the next screen

1.2.9 Setting Scheduler BIP/GI Upload Queue Properties

Oracle FLEXCUBE Universal Installer

Oracle Banking Installer ORACLE INSTALLER

Property File Creation - Scheduler BIP/GI Upload Queue
Option for configuring Scheduler BIP and BIP Advice report.

Bip Queue Name: INTERNAL_BIPREPORT_QUEUE
Bip DeadLetter Queue Name: INTERNAL_BIP_QUEUE_DLQ
BipAdvice Queue Name: ERNAL_BIPADVREPORT_QUEUE
BipAdvice DeadLetter Queue Name: RNAL_BIP_ADVICE_QUEUE_DLQ
Queue connection factory: BIPQCF

Secure Caller ID
Caller password

Option for configuring details for Scheduler GI Upload Queue

Queue Name: INTERNAL_GI_UPLOAD_QUEUE
Dead Letter Queue Name: INTERNAL_GI_UPLOAD_DLQ
Queue connection factory: GI_UPLOAD_QCF

Secure Caller ID
Caller Password

Exit Log Back Next

Once you have specified the above details, click 'Next' and system displays the next screen.

If scheduler is not selected, you will be skipped to the next screen directly from the OFTW details screen.

1.2.10 Setting Reports details

Oracle FLEXCUBE Universal Installer

Oracle Banking Installer **ORACLE INSTALLER**

Property File Creation - Reports

Option for modifying the Oracle BI Publisher properties.

No.	Name	Value
1	Server End Point	http://10.10.10.10:0101/xmlpserver/services/v2/ReportService?wsdl
2	Name Space	http://xmlns.oracle.com/oxp/service/PublicReportService
3	User Name	Administrator
4	Password	*****
5	Reports Advice Spool Path	/ReportsSpool
6	Advice Type	NATIVE
7	BIP Server Version	12c
8	BIP Time Zone	IST

Option for modifying the OBIEE and other property values

OBIEE ENABLED

OBIEE URL

OBIEE FOLDER

OBIEE SIGNOUT URL

For BI Publisher properties ,

This table will be enabled only if REPORTS_ENABLED plug-in is selected.

Specify the following details:

Server End Point

Specify the BIP end point.

<http://whf00blq:9502/xmlpserver/services/v2/ReportService?wsdl>. However, you need to change the IP and port where BIP Application is installed. WSDL URL gets modified based on "BIP Server Version" on selecting the required version from the dropdown.

Name Space

Specify the BIP name space.

By default, the installer displays 'http://xmlns.oracle.com/oxp/service/PublicReportService'.

User Name

Specify the BIP user name. By default, the Installer displays 'Administrator'.

Password

Specify the password for the above user name. By default, the Installer sets it as 'Administrator'.

Reports Spool Path

Specify the reports spool path. By default, the Installer displays /ReportsSpool

Advice Type

Specify the advice type. You can choose one of the following:

- NATIVE – This advice type is used for generating advices in text format
- BIP – This advice type is used for generating advices in PDF format.

BIP Server Version

Specify the qualified BIP server version. You can select the appropriate one from the adjoining drop-down list.

BIP Time Zone

Specify the time zone of the BIP server.

OBIEE properties will be always shown.

OBIEE Enabled

Chose Yes/No from the drop down box.

OBIEE URL

Provide OBIEE URL path.

OBIEE Folder

Provide a folder path at the application server level.

OBIEE Signout URL

Provide OBIEE signout URL.

1.2.11 Setting BPEL Properties

No.	Name	Value
1	Factory Initial	weblogic.jndi.WLInitialContextFactory
2	Provide Url	t3://10.10.10.10:0101?partitionName=DOMAIN
3	Security Principal	oc4jadmin
4	Security Credentials	*****
5	SOA Partition Name	default
6	Domain Password	*****
7	Dedicated Connection	<input checked="" type="checkbox"/>
8	BPEL Relam Name	jazn.com
9	WorkFlow Client Type	REMOTE
10	BAM URI	http://10.10.10.10:1001/OracleBAM/16734
11	BPM INSTALLED	<input type="checkbox"/>

No.	Name	Value
1	BI User	*****
2	BI Password	*****

Specify the following details:

Factory Initial

Specify the factory initial. By default 'weblogic.jndi.WLInitialContextFactory' is specified, retain the same.

Provider URL

Specify the URL of the server. Enter the IP address, target server port (AdminServer/ManagedServer) and the context root.

Sample URL with domain name appended along with the URL:
t3://localhost:7001?partitionName=DOMAIN

Security Principal

Specify the user name to access the application server where BPEL is installed.

Security Credential

Specify the password for the above user name.

Soa Partition Name

Specify the Soa Server Name. By default it's 'default'.

Domain Password

Specify the domain password for which SOA server is extended

Dedicated Connection

Check this box to indicate that this connection is not used for other purposes.

BPEL Realm Name

Specify the BPEL realm name.

By default it's jazn.com

Workflow Client Type

Specify whether Workflow Client Type is REMOTE or LOCAL. By default, it is selected as REMOTE.

BAM URI

Specify the BAM URI.

BPM Installed

Check this box if the BPM is installed.

External Alerts Required

Specify 'YES' external alerts are required , else 'NO'.

Enabling Load Balance

This is a checkbox , check it if Load Balance is required. By default it is checked.

Frequency, Task Counts and CutOff time - Enter these details

BPEL – BI Properties

BI User: Specify the BI User

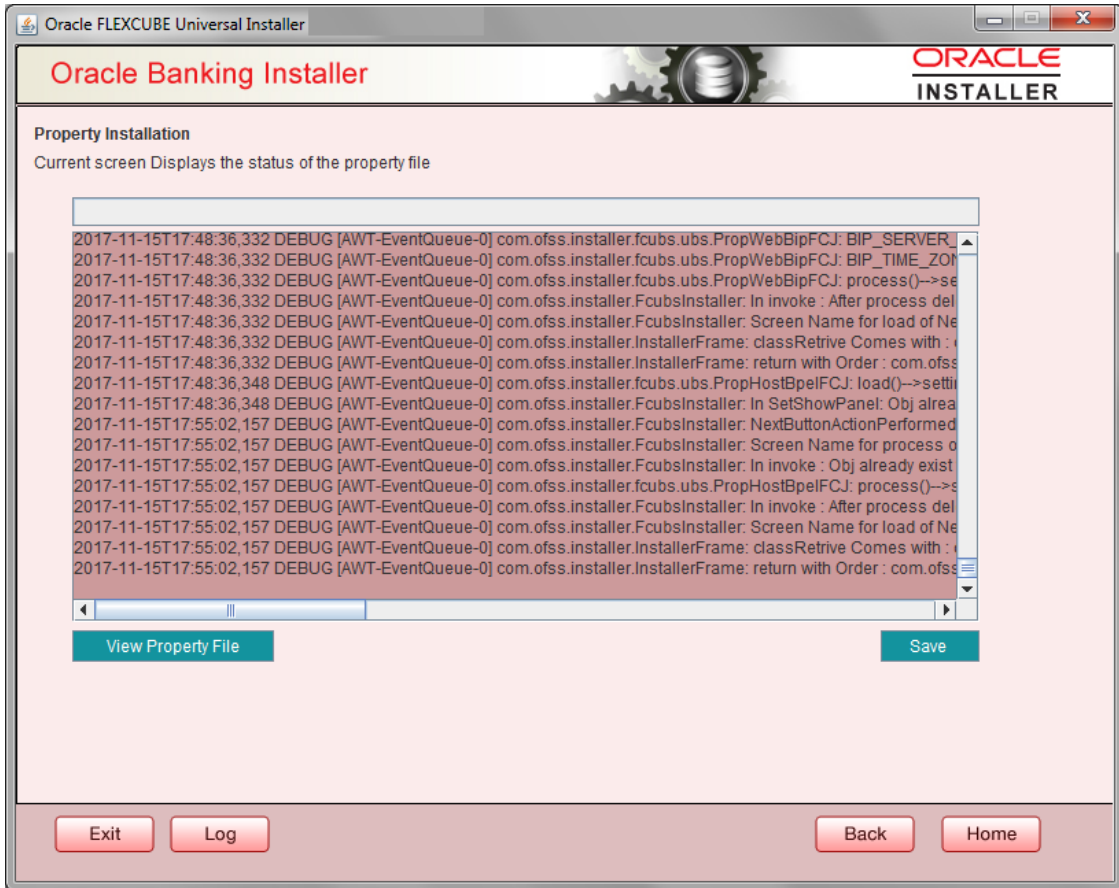
BI Password: Specify the BI Passwor

Once you have specified the above details, click 'Next' and system displays the next screen.

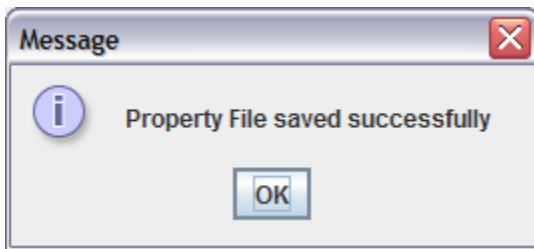
1.2.12 Saving Property File

After completing all the required settings explained above, you need to save the property file.

1. Save the property file.



You can view the status of property file creation in the above screen. Once the file is saved, the installer displays the following message:



This completes the properties file creation. Along with the property file creation, env.properties file is also generated in \INSTALLER\SOFT\GUI\logs path and will be automatically copied to \INSTALLER\SOFT\logs folder.

Note: Env.properties file parameters gets updated during every property file creation (like FCUBS, Gateway, Scheduler etc). After Property file creation, proceed with respective EAR build and then proceed with other components property file creations and build.

Also OracleIPMAdapter.properties is generated in same path as fcubs.properties when IPM plugin has been enabled.



Installer Property File Creation
[December] [2018]
Version 14.2.0.0.0

Oracle Financial Services Software Limited
Oracle Park
Off Western Express Highway
Goregaon (East)
Mumbai, Maharashtra 400 063
India

Worldwide Inquiries:
Phone: +91 22 6718 3000
Fax: +91 22 6718 3001
<https://www.oracle.com/industries/financial-services/index.html>

Copyright © [2007], [2018], Oracle and/or its affiliates. All rights reserved.

Oracle and Java are registered trademarks of Oracle and/or its affiliates. Other names may be trademarks of their respective owners.

U.S. GOVERNMENT END USERS: Oracle programs, including any operating system, integrated software, any programs installed on the hardware, and/or documentation, delivered to U.S. Government end users are "commercial computer software" pursuant to the applicable Federal Acquisition Regulation and agency-specific supplemental regulations. As such, use, duplication, disclosure, modification, and adaptation of the programs, including any operating system, integrated software, any programs installed on the hardware, and/or documentation, shall be subject to license terms and license restrictions applicable to the programs. No other rights are granted to the U.S. Government.

This software or hardware is developed for general use in a variety of information management applications. It is not developed or intended for use in any inherently dangerous applications, including applications that may create a risk of personal injury. If you use this software or hardware in dangerous applications, then you shall be responsible to take all appropriate failsafe, backup, redundancy, and other measures to ensure its safe use. Oracle Corporation and its affiliates disclaim any liability for any damages caused by use of this software or hardware in dangerous applications.

This software and related documentation are provided under a license agreement containing restrictions on use and disclosure and are protected by intellectual property laws. Except as expressly permitted in your license agreement or allowed by law, you may not use, copy, reproduce, translate, broadcast, modify, license, transmit, distribute, exhibit, perform, publish or display any part, in any form, or by any means. Reverse engineering, disassembly, or decompilation of this software, unless required by law for interoperability, is prohibited.

The information contained herein is subject to change without notice and is not warranted to be error-free. If you find any errors, please report them to us in writing.

This software or hardware and documentation may provide access to or information on content, products and services from third parties. Oracle Corporation and its affiliates are not responsible for and expressly disclaim all warranties of any kind with respect to third-party content, products, and services. Oracle Corporation and its affiliates will not be responsible for any loss, costs, or damages incurred due to your access to or use of third-party content, products, or services.